



Paged

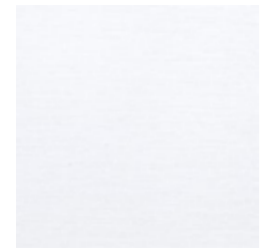
WZORNIK
TKANIN

FABRIC
SAMPLE BOOK

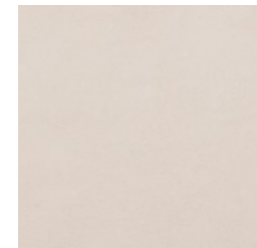
1

GRUPA CENOWA / PRICE GROUP

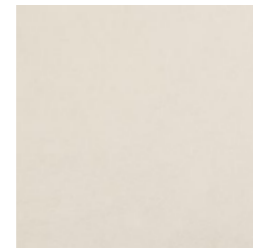
Paged



Vienna 1



Vienna 2



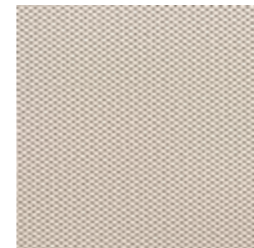
Vienna 3



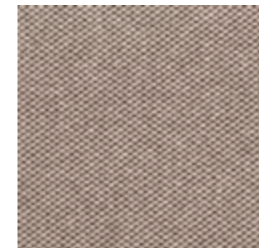
Vienna 4



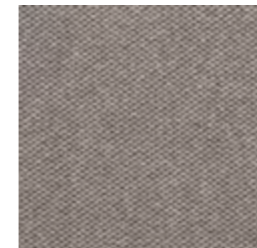
Novel 01



Novel 02



Novel 03



Novel 04



Hugo 1



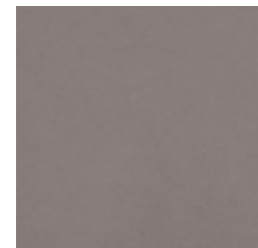
Hugo 2



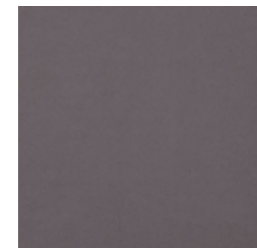
Hugo 3



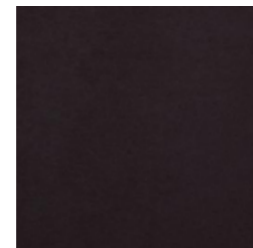
Hugo 4



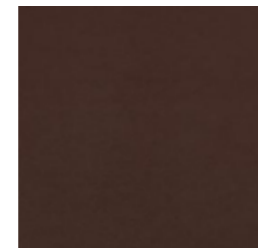
Vienna 5



Vienna 6



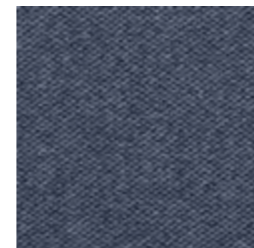
Vienna 7



Vienna 8



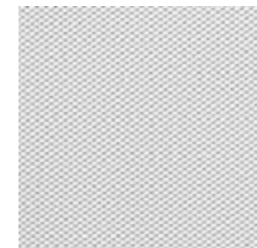
Novel 07



Novel 08



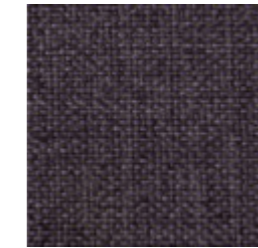
Novel 09



Novel 10



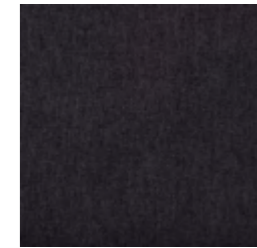
Hugo 5



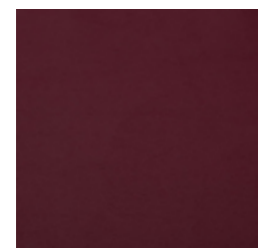
Hugo 6



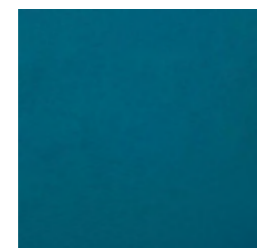
Hugo 8



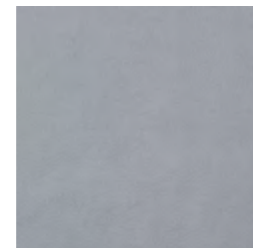
Hugo 11



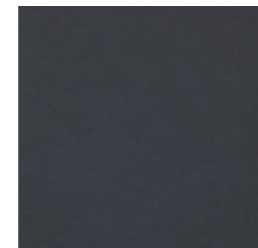
Vienna 10



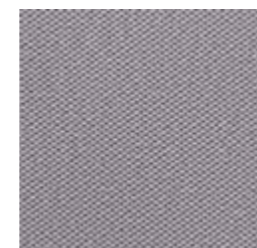
Vienna 12



Vienna 15



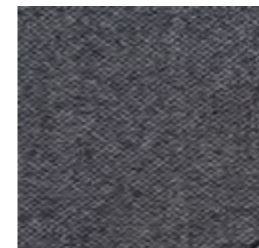
Vienna 16



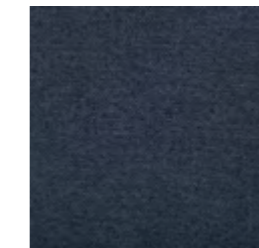
Novel 11



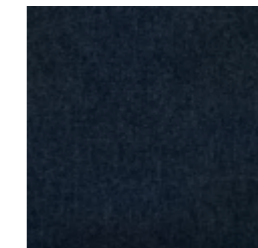
Novel 12



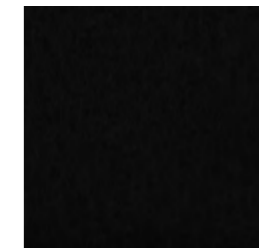
Novel 13



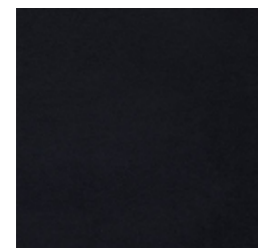
Hugo 12



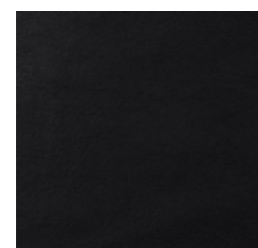
Hugo 13



Hugo 14



Vienna 17

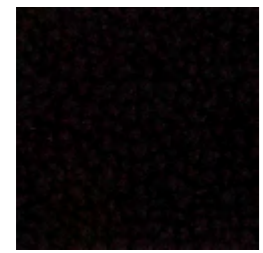


Sahara 16

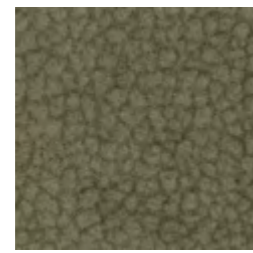
2

GRUPA CENOWA / PRICE GROUP

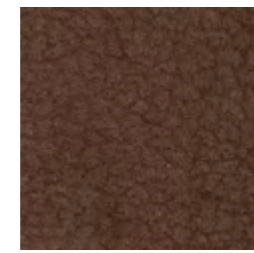
Paged



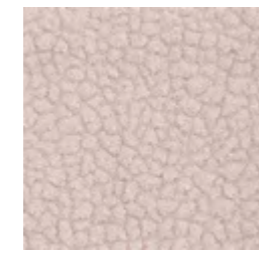
Carabu 33



Carabu 49



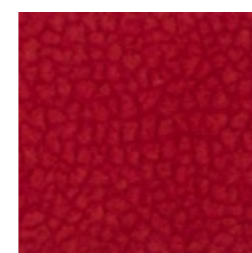
Carabu 57



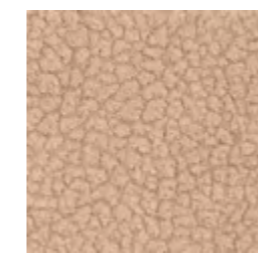
Carabu 60



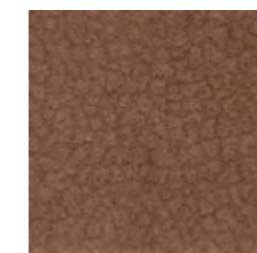
Carabu 94



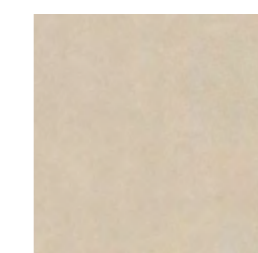
Carabu 98



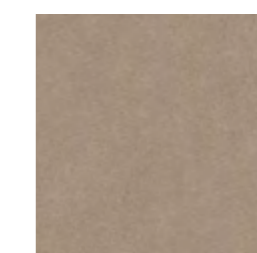
Carabu 102



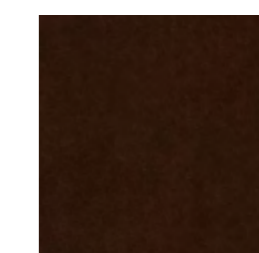
Carabu 106



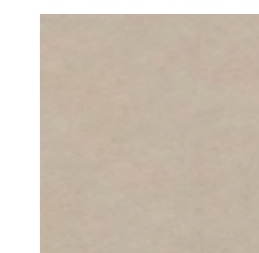
Nordic 101



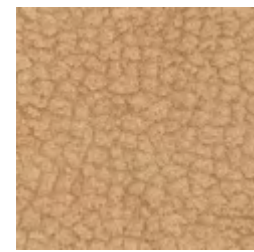
Nordic 108



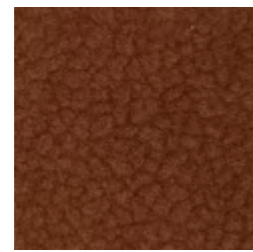
Nordic 113



Nordic 114



Carabu 66



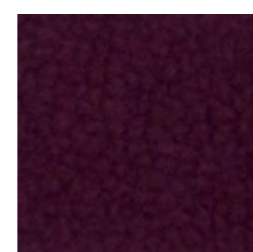
Carabu 69



Carabu 72



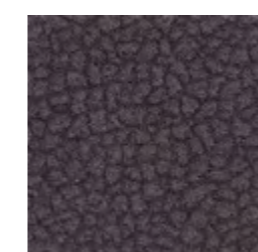
Carabu 75



Carabu 107



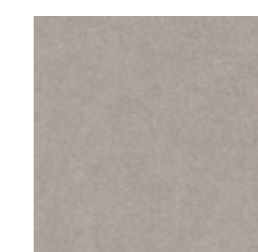
Carabu 108



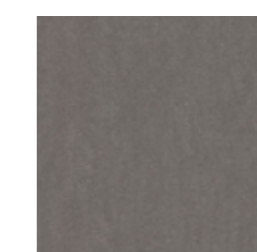
Carabu 110



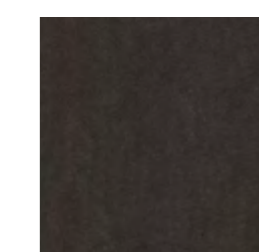
Carabu 131



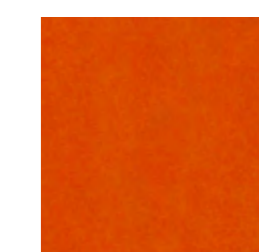
Nordic 115



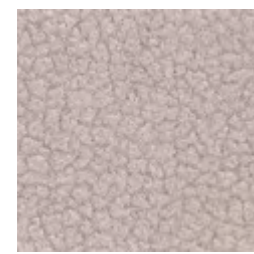
Nordic 116



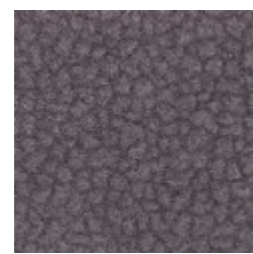
Nordic 117



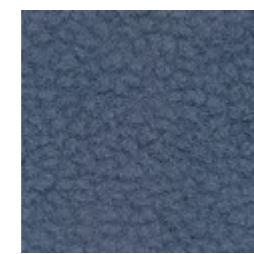
Nordic 119



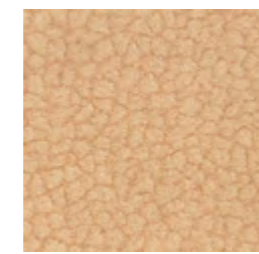
Carabu 76



Carabu 77



Carabu 78



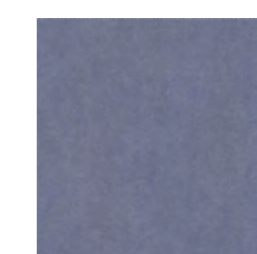
Carabu 81



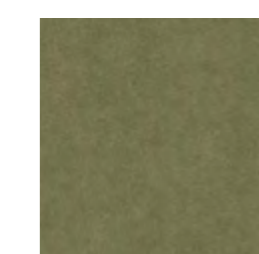
Carabu 132



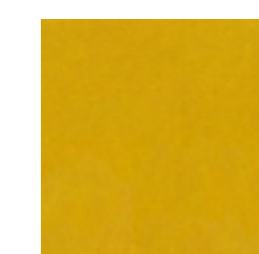
Nordic 120



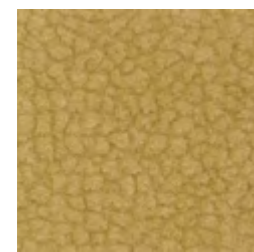
Nordic 121



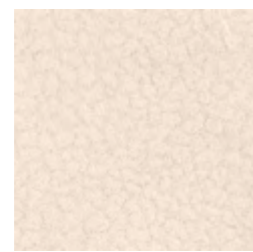
Nordic 128



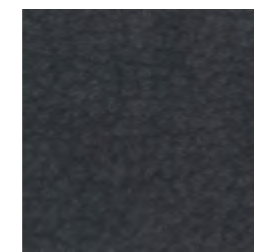
Nordic 129



Carabu 84



Carabu 86



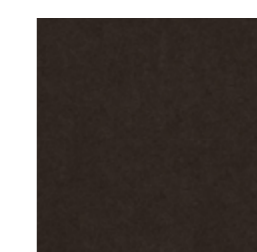
Carabu 91



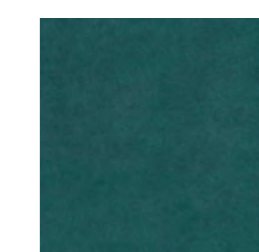
Carabu 92



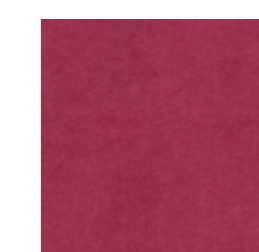
Nordic 131



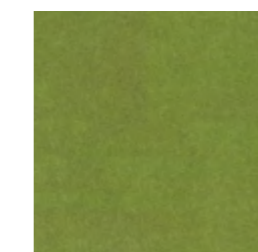
Nordic 132



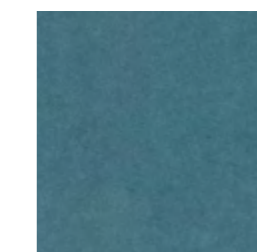
Nordic 901



Nordic 906



Nordic 907



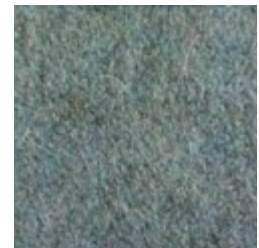
Nordic 909

Próbki tkanin mają charakter poglądowy. Nie należy oczekiwać idealnej kopii.
The sample is provided as a guide only. Therefore an exact match cannot be guaranteed.

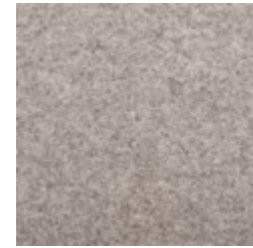
3

GRUPA CENOWA / PRICE GROUP

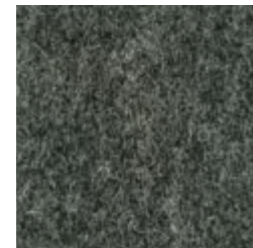
Paged



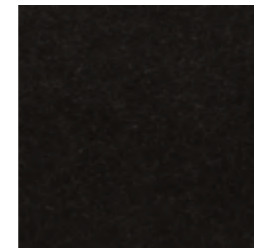
Wool T5065/81



Wool T5065/1000



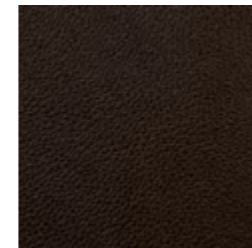
Wool T5065/1001



Wool T5065/1003



Ginkgo Blanc



Ginkgo Chocolat



Ginkgo Citrouille



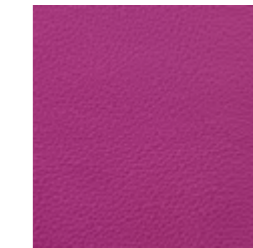
Ginkgo Dune



Ginkgo Nuit



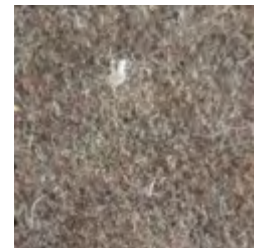
Ginkgo Granny



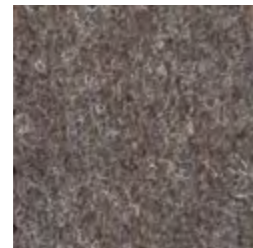
Ginkgo Begonie



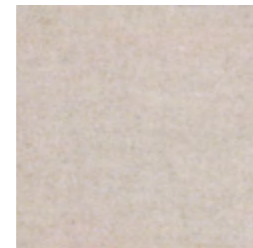
Ginkgo Quetsche



Wool T5065/1008



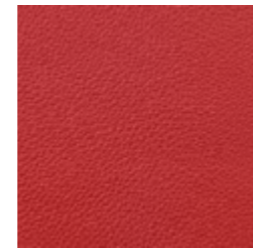
Wool T5065/1008B



Wool T5065/1037



Wool T5065/1040



Ginkgo Groseille



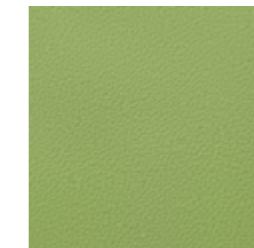
Ginkgo Mastic



Ginkgo Mirabelle



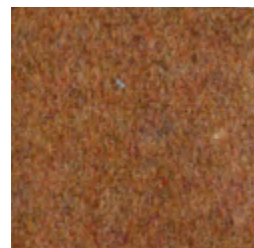
Ginkgo Pivoine



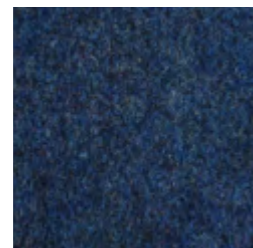
Ginkgo Amande



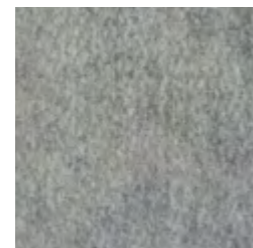
Ginkgo Myrtille



Wool T5065/2012



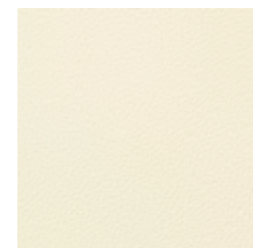
Wool T5065/2019



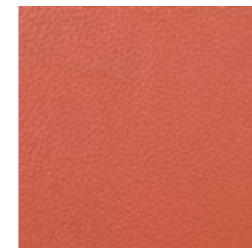
Wool T5065/2256



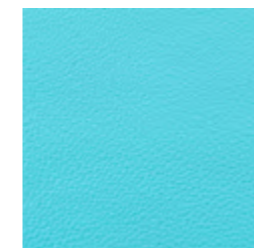
Wool T5065/2271



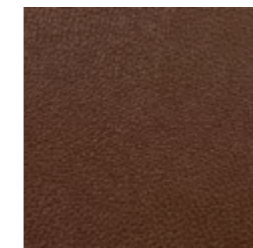
Ginkgo Seigle



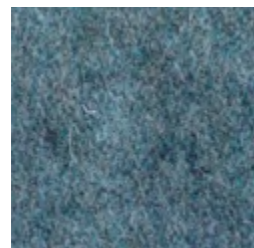
Ginkgo Tomette



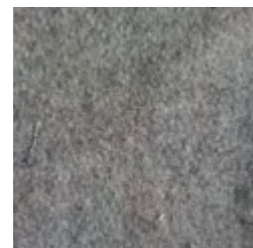
Ginkgo Turquoise



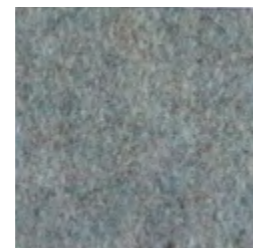
Ginkgo Cafe



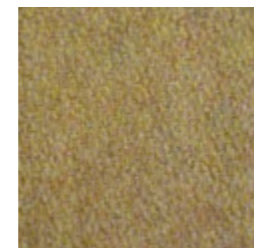
Wool T5065/2288



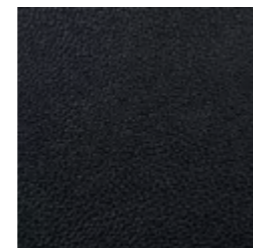
Wool T5065/2295



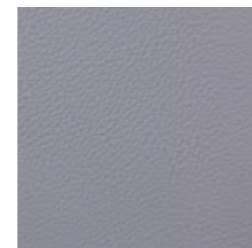
Wool T5065/2314



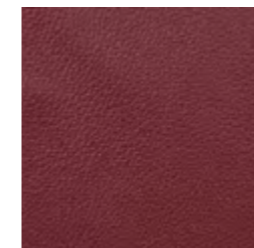
Wool T5065/2316



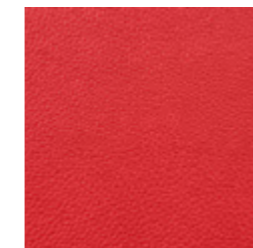
Ginkgo Anthracite



Ginkgo Souris



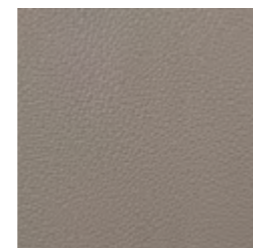
Ginkgo Morgon



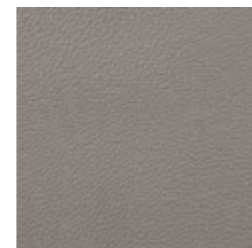
Ginkgo Tomate



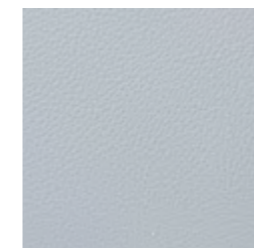
Wool T5065/9860



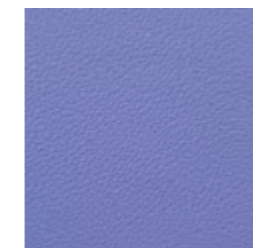
Ginkgo Terre



Ginkgo Taupe



Ginkgo Pierre



Ginkgo Lavande

4

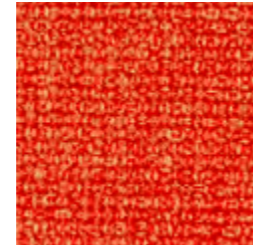
GRUPA CENOWA / PRICE GROUP



Gabriel Medley
61002



Gabriel Medley
62002



Gabriel Medley
63013



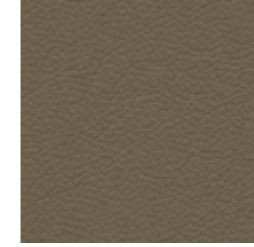
Gabriel Medley
63016



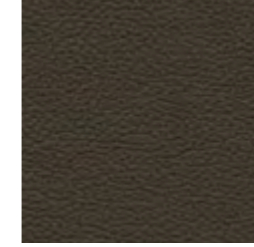
Hermes Purewhite



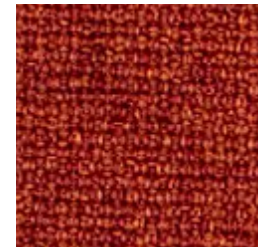
Hermes Sand



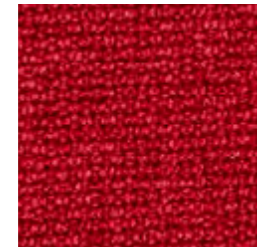
Hermes Mocca



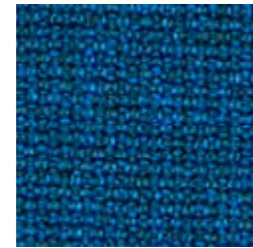
Hermes Choco



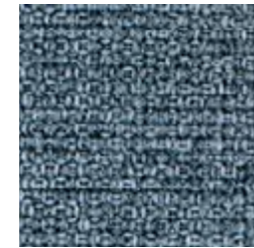
Gabriel Medley
63017



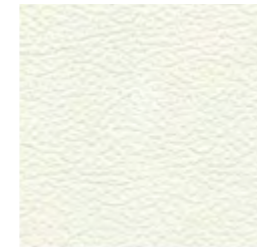
Gabriel Medley
64019



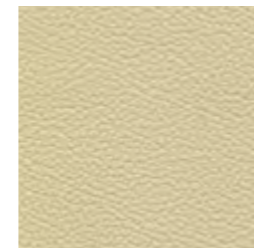
Gabriel Medley
66007



Gabriel Medley
66008



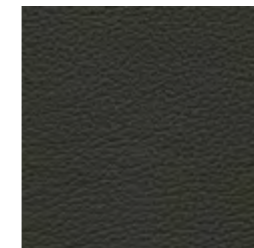
Hermes Bianco



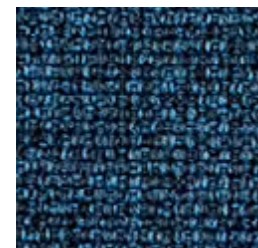
Hermes Ivory



Hermes Djerba



Hermes Bruin



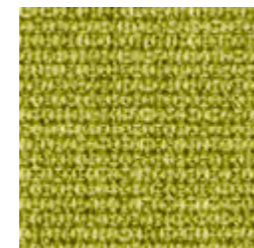
Gabriel Medley
66010



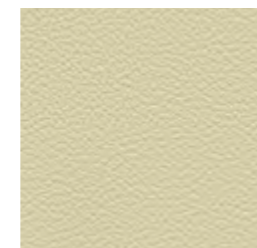
Gabriel Madley
67002



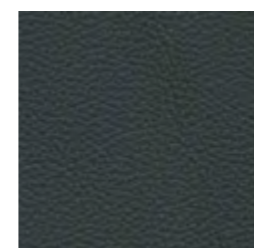
Gabriel Medley
67006



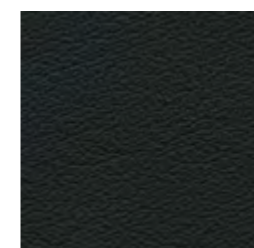
Gabriel Medley
68002



Hermes Cream



Hermes Antracite



Hermes Nero

1 GRUPA CENOWA PRICE GROUP

skład / composition
65% PU, 21% PES, 14% CO
waga / weight
480 g/m² ± 10 g/m²
normy przeciwpożarowe / flame retardant
-
test Martindale'a / Martindale test
> 50 000 cykli / rubs
odporność na tarcie / frictional resistance
na sucho 4 / na mokro 4
wytrzymałość na rozdarcie / tear strength
osnowa > 25 N / wątek > 25 N
wytrzymałość na rozciąganie / tensile strength
osnowa > 350 N / wątek > 350 N
odporność na światło / light resistance
> 4

VIENNA
Fargotex

skład / composition
100% PES
waga / weight
360 g/m²
normy przeciwpożarowe / flame retardant
-
test Martindale'a / Martindale test
> 45 000 cykli / rubs
odporność na tarcie / frictional resistance
na sucho 4-5 / na mokro 4-5
wytrzymałość na rozdarcie / tear strength
osnowa 120 N / wątek 120 N
wytrzymałość na rozciąganie / tensile strength
osnowa 580 N / wątek 590 N
odporność na światło / light resistance
> 4
odporność na pilling / pilling resistance
4

NOVEL
Fargotex

skład / composition
100% PES
waga / weight
285 g/m² ± 10 g/m²
normy przeciwpożarowe / flame retardant
-
test Martindale'a / Martindale test
30 000 cykli / rubs
odporność na tarcie / frictional resistance
na sucho 4 / na mokro 3-4
wytrzymałość na rozdarcie / tear strength
osnowa > 70 N / wątek > 130 N
wytrzymałość na rozciąganie / tensile strength
osnowa > 860 N / wątek > 1079
odporność na światło / light resistance
5/6
odporność na pilling / pilling resistance
4/5

HUGO

2 GRUPA CENOWA PRICE GROUP

skład / composition
50% PES, 35% ACRIL, 15% PA
waga / weight
410 g/m²
normy przeciwpożarowe / flame retardant
EN 1021 1-2, BS5852 1-2
test Martindale'a / Martindale test
200 000 cykli / rubs
odporność na tarcie / frictional resistance
4
wytrzymałość na rozdarcie / tear strength
20 N (BS 4303) -> 3 daN
wytrzymałość na rozciąganie / tensile strength
350
odporność na światło / light resistance
6
odporność na pilling / pilling resistance
4

**aqua
clean**
TECHNOLOGY

CARABU
AquaClean

skład / composition
50% PES, 35% ACRIL, 15% PA
waga / weight
410 g/m²
normy przeciwpożarowe / flame retardant
EN 1021 1-2, BS5852 1-2
test Martindale'a / Martindale test
100 000 cykli / rubs
odporność na tarcie / frictional resistance
4
wytrzymałość na rozdarcie / tear strength
20 N (BS 4303)>3
wytrzymałość na rozciąganie / tensile strength
350
odporność na światło / light resistance
6
odporność na pilling / pilling resistance
4

**aqua
clean**
TECHNOLOGY

NORDIC
AquaClean

3 GRUPA CENOWA PRICE GROUP

skład / composition
70% WO 25% PA 5% AF
waga / weight
400 g/m²
normy przeciwpożarowe / flame retardant
EN 1021/1, EN 1021/2
test Martindale'a / Martindale test
> 40 000 cykli / rubs
odporność na tarcie / frictional resistance
na sucho 4-5 / na mokro 4
wytrzymałość na rozdarcie / tear strength
43N/28.9N
wytrzymałość na rozciąganie / tensile strength
511N/301N
odporność na światło / light resistance
4/5

WEŁNA
T5065
wool

skład / composition
85 % PVC, 15 % COTTON
waga / weight
830 g +/- 40 g//m²
normy przeciwpożarowe / flame retardant
M1 (NFP 92503), AM 18, BS 5852 crib 5,
B5 (DIN 4102), EN 1021.1-2-3, EN 13501-1
IMO A652, JAR 25 / FAR 25.853, CATB 117
test Martindale'a / Martindale test
150 000 cykli / rubs
odporność na światło / light resistance
> 6

GINKGO

4 GRUPA CENOWA PRICE GROUP

skład / composition
100% Polyester
waga / weight
510 g/m²
normy przeciwpożarowe / flame retardant
EN 1021 1&2,
BS5852 Part 1 0,1 Cigarette & match
test Martindale'a / Martindale test
75 000 cykli / rubs
odporność na tarcie / frictional resistance
na sucho 4-5 / na mokro 4-5
odporność na światło / light resistance
5-7
odporność na pilling / pilling resistance
4

MEDLEY
Gabriel